

Laser hair regrowth helmet

Intelligent laser hair growth helmet user's Guide

Version 2024120901



Thank you for using Smart Laser Hair Growth helmet, please read the instruction manual carefully so that you can wear it in a safe and standardized manner.

Laser hair regrowth helmet

1. Brief introduction of laser hair growth helmet

1.1 Product Introduction

Intelligent Laser Hair Growth helmet is a soft laser hair care product, which not only has the effects of oil control and hair loss prevention, hair growth and dense hair, hair strengthening and firming, etc. The gentle laser can also make you feel at ease, relax and enjoy twenty minutes quiet time.

This product has reached the medical laser with a wavelength of 680nm and the laser spot area that can effectively cover a wide range of scalp, and the effective energy that meets the certification. The laser light beam can reach the root of hair follicle 3-5mm directly, stimulate the hair follicle cells, and rejuvenate the cells to generate energy.

Built-in cold laser lamp beads, different numbers of lamp beads can be used for people with different degrees of hair loss, the laser beam can cover the damaged scalp in the largest range, and achieve the best hair growth and fixation hair effect. Follow the instructions for use and use it consistently for a long time, it will no longer be a dream to have beautiful hair.

1.2 Function overview:

1.2.1 Control panel and button switch.

1.2.1.1 Control the power on and off through the ON/OFF button switch.



1.2.1.2. Each working time is fixed for 20 minutes, and it will automatically shut down when the time is up.



1.2.1.3. If something happens in the middle, you can manually shut down.

1.2.1.4. There are 4 bars on the product to display the battery power. 4 full grids indicate 100% power, and 0 grids indicate that it needs to be charged.

1.2.2 Query function

1.2.2.1 Long press the adjustment button near the type-c port until the following interface display format is displayed. 0043 means total 43 times are used.



1.2.2.2 Turn the up (decrease) and down (increase) keys on the right side of type-c to query the usage records, and display the records of the number of times in the above picture on different days.

2. The technical principle of laser hair growth

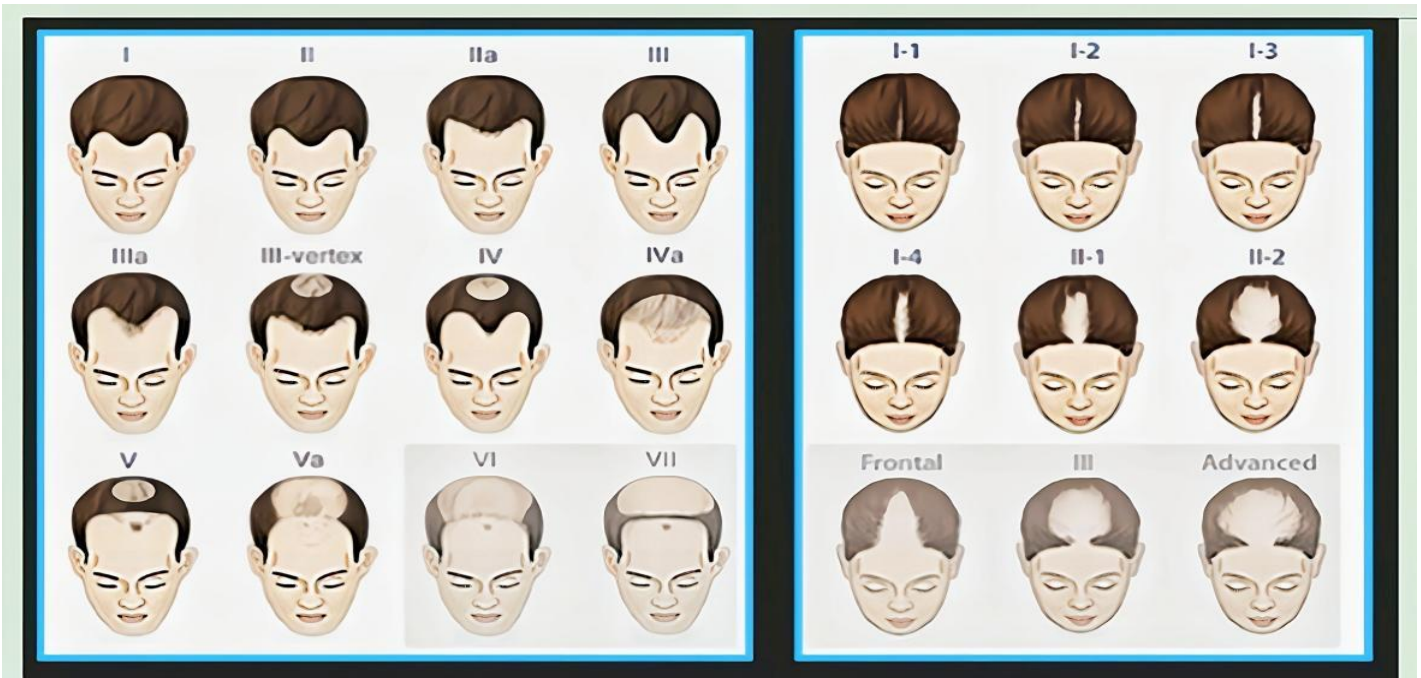
Soft laser technology, also called LLLT (Low Level Laser Therapy), is also called low power laser in Chinese, and only one power is certified for hair. After adopting LLLT, the metabolism of the cells is increased and the interaction is enhanced. As long as the soft laser has a suitable wavelength (680nm) and laser spot area, and penetrates into the hair follicle layer, it can activate the hair follicle cells and improve their vitality.

Hair has three growth cycles, which are growth phase, catagen phase and resting phase, cycle cycle, but when a large amount of hair is in the resting phase, it will show obvious hair loss. The hair follicle cells in the telogen stage lack vitality and are in a dormant state.

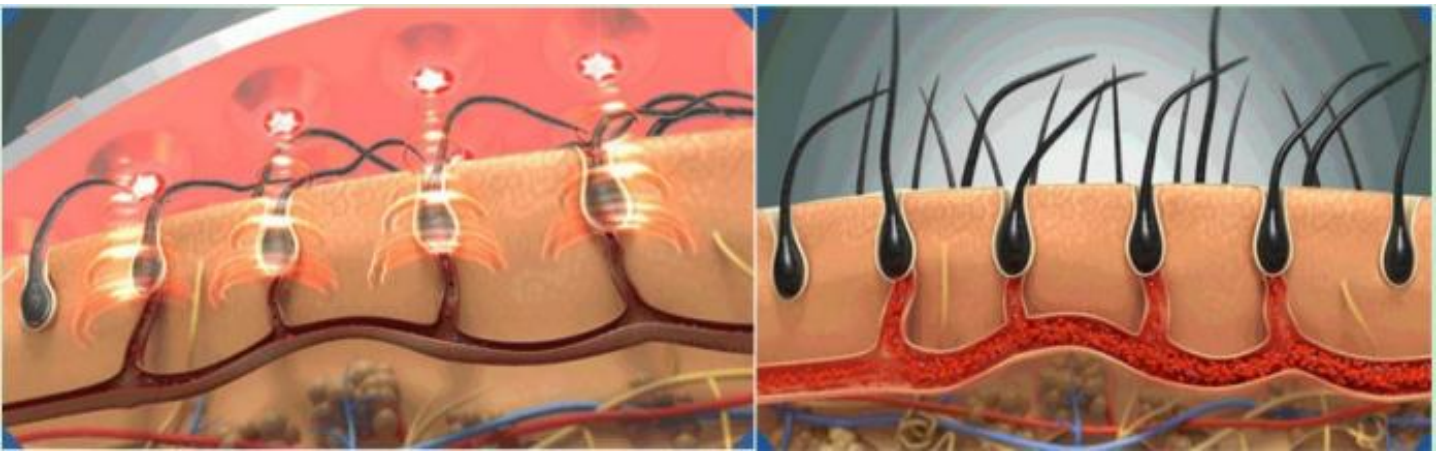
If it is awakened by soft laser at this time and its vitality is improved, the transformation from the resting period to the growth period can be realized, thereby realizing hair growth. But this process takes different time depending on the individual, generally 6-9 months.

In 2013, Japanese scientist Yamazaki M. organized an experiment in which 15 patients with alopecia areata (6 men and 9 women) received a laser helmet for infrared laser irradiation. Their scalps receive a 3-minute treatment once a week

It was found that among 47% of people who received infrared laser irradiation, the hair growth of the irradiated skin was 1.6 months earlier than that of the non-irradiated skin, and all scalp diseases disappeared after 1 year of irradiation. Irradiated diseased skin and non-diseased skin converged in hair density, length, and hair shaft diameter. This confirms that the laser hair growth helmet can effectively promote the process of hair regrowth in patients with alopecia areata.



The earlier the hair loss is intervened, the more likely it is to treat it, and if there is a large amount of necrosis of the hair follicles, it is difficult to reverse.



Stable and continuous low-energy laser irradiation stimulates capillaries in the head and increases blood flow

Increase the nutrient supply of hair follicles, renew hair follicle cells, and increase the toughness of hair

Before & after use



3. Product structure characteristics

- The food-grade shield does not hurt the skin.
- The circular hole design at the lamp bead prevents energy from dissipating.
- Lightweight and comfortable to wear, you can move with your heart.
- The soft head pad provides considerate service to meet the needs of customers with different head shapes.
- Powered by rechargeable batteries, safe and convenient. One charge, can be used many times.
- Control the power on and off by the ON/OFF button switch. One-key operation, farewell to tedious work. One-button control, independent control of time.

4. Basic product information

Color: White with Blue Ring (Color can be customized if Order quantity 500 pcs)

Product size: (L*W*H): 270*230*150 mm

Battery: 603450 3.7V 2*1200mah

Laser bead: 680nm+/-5% 4-5mw

Product list:

| Item | P/N | product | Laser beads pcs | Remark |
|------|----------|-----------------------|-----------------|--------|
| 1 | HGSY-001 | Laser Hair growth cap | 269 | |
| 2 | HGSY-002 | Laser Hair growth cap | 117 | |
| 3 | HGSY-003 | Laser Hair growth cap | 93 | |

Product Image



5. Technical parameters

- It adopts the soft laser technology from Silicon Valley in the United States, which is clinically effective and verified. (Refer to the introduction of the 2nd principle)
- **It is the first company in China to adopt SMD laser light, which is safe and reliable.**
- Built-in battery, easy to use and carry, beautiful and stylish.
- Built-in infrared recognition pair tube, remove it from the head, the laser hair growth helmet stops working immediately.
- Using Type-C charging, no longer worry about reverse plugging and damaging the charging port.
- The laser power adopts safety laser.

6. Usage method and precautions

6.1 Operating Instructions:





- Take product from storage case to wear.
- Press the switch, the laser hair growth helmet starts to work.
- If the laser hair growth helmet is working, it is detected by infrared that the laser hair growth helmet leaves the head, and the laser hair growth helmet will stop working. If puts on the laser hair growth helmet again within 1minute, the laser hair growth helmet will continue to work.
- After working for 20 minutes, the laser hair growth helmet will stop working automatically.
- Organize the laser hair growth helmet and put it back in the storage box for storage.
- **Regardless of whether the laser hair growth helmet is working or not, when it is plugged into an external power source for charging, the laser hair growth helmet is forcibly turned off.**

6.2 Use cycle

It is recommended to use it 1-2 times a day (users with severe hair loss can use it twice a day in the early stage, and reduce the frequency of use in the middle and late stages).

Insist on using it, most users will have the following process

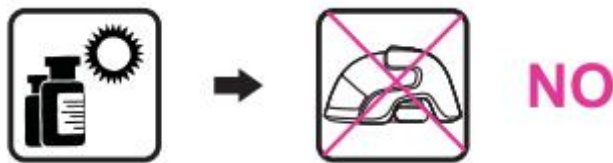
At beginning, users may see slight hair loss, this is normal. Through photodissociation, LLLT causes cytochrome C oxidase (CCO) to undergo redox reactions to produce nitric oxide (NO), energy molecules adenosine triphosphate (ATP), and reactive oxygen species (ROS), thereby promoting blood circulation and promoting hair growth. Provide energy, expel the garbage and damaged hair in the hair follicles, so as to maintain the health of the hair follicles.

| | | |
|---|---------------|--|
|  | 1st month | Most people: 1. Hair oil control is finished and improved. 2. The scalp inflammation and sensitivity have improved. 3. Hair loss has stopped. |
|  | 2nd-3rd month | Tiny hairs have begun to appear, which may not be very noticeable. |
|  | 4-6th month | Most users can look forward to fuller, healthier hair growing |
|  | 7-9 month | Most users basically already have abundant and healthy hair, and insist on using this laser hair growth helmet according to their own conditions. |

Remember, hair growth takes time, please be patient and persistent.

6.3 The laser hair growth helmet is contraindicated in the following situations.

- Do not use this product if you have a medical condition that is sensitive to light or sunlight, or if you are taking photosensitizing medications.



- Do not use this product if you have cancer on your scalp



- Do not use this product if you have sensitive skin or are allergic to specific light at 680nm+/-5%. Allergic skin or allergic reactions may cause itching or redness of the scalp. If this happens, seek medical help.



- Persons under the age of 18 should not use this product.
- This product is not recommended for people with hereditary hair loss and failure to grow.

6.3 Warnings and Precautions

- Do not look directly at the laser, or use optical helmets such as magnifying glasses and microscopes to observe the laser.
- If scalp itching or tingling occurs during use, please discontinue use.
- Do not get product or batteries wet

-
- Do not place the product close to high-temperature heating objects, such as stoves, ovens, heaters, etc.
 - Do not use when hair is wet.
 - Please keep the product out of the reach of minors and pets.
 - Please unplug the product before cleaning it.
 - The product cannot be used while charging, please pay special attention.
 - Do not repair the product by yourself, when the product fails, please contact customer service
 - Securely place the product to avoid dropping the product, which may cause malfunction or damage to the product. If it falls and is damaged, please contact customer service for assistance.

7. cleaning, storage

7.1 Cleaning and maintenance

- Please wipe the product with a soft cloth
- Do not wipe products with corrosive chemical solvents
- Avoid liquids entering the product during cleaning and causing malfunctions.

7.2 Product Storage

After each use, please put the product into a dedicated packing box. And place the packing box in a safe environment. Do not place it in an environment with high temperature, humidity, strong magnetism and high pH to avoid damage to the product.

8. Packing list

- manual
- A laser hair growth helmet
- TYPE-C charger set
- 1 storage box (non-disposable packaging)
- A simple flannel bag

9. Warranty card

Thank you very much for choosing laser hair growth helmet, which gives us the opportunity to provide the best service. In order to satisfy you with our service, please read this instruction carefully after purchase and help keep this warranty card properly.

Warranty:

1. During the warranty period, we provides product protection, starting from the date of purchase, and repairing the product free of charge. Products under warranty will only be repaired at brand-approved locations. For warranty, please provide this warranty card or other valid certificates with the date of purchase.
2. It is strictly forbidden to disassemble or modify this product without permission. Violent use and operation of this product is strictly prohibited. Unauthorized disassembly and violent use will invalidate the warranty.
3. During the following period from the date of purchase of the product, it shall be repaired if a failure occurs during normal use. In any of the following cases, even within the warranty period, it cannot be treated as a warranty, but it can be repaired for a fee (component cost).
 - Violation of product instructions results in product damage.
 - Use of expansion components that are not legally certified may result in product damage.
 - Exceeding the allowable use environment will cause product damage, such as high temperature and corrosion.
 - The product is damaged due to abnormal external force, such as falling, hitting, etc.
 - Counterfeit Products.
 - Unable to provide valid proof of purchase.
 - Damage caused by force majeure, such as fire, etc.

In order to provide better services, please complete the following information.

| Warranty Card | |
|-------------------|--------------------------|
| product name | Laser hair growth helmet |
| Product number | |
| Customer Name | |
| date of purchase | |
| Fault description | |
| maintenance date | |

Thanks again, wish you a nice day!